



Wind[•]
EUROPE

Our Wind, Our Community

From crisis to confidence – driven by local wind energy

Our Wind, Our Community

From crisis to confidence – driven by local wind energy

Published in June 2026

Wind[•]
EUROPE

windeurope.org



Europe's wind industry is delivering more than clean electricity. It is building partnerships and creating local value, shaping the energy transition in communities across the continent. Every project is embedded in its own landscape and shaped by specific concerns.

This brochure showcases how the industry is rising to meet these realities. From early engagement with residents to tailored solutions that respond to local feedback, these projects demonstrate that meaningful community involvement is widespread.

Some projects advanced smoothly; others required years of dialogue and compromise. Together, they prove that successful wind development cannot be one-size-fits-all. It thrives when grounded in local context and long-term relationships.

As Europe accelerates toward its ambitious clean energy goals and greater energy independence, these stories offer a blueprint for ensuring that the energy transition is both effective and widely supported. And as we mark this year's Global Wind Day with the Our Wind, Our Community campaign, WindEurope is proud to show what's possible when wind energy and communities grow together.



Contents

Case studies

7

Andau Wind Farm (Austria)	7	Rivoli Veronese Wind Farm (Italy)	29
Boneffe Wind Farm (Belgium)	8	Laflora Energy Wind Farm (Latvia)	30
Kluizendok Wind Farm (Belgium)	9	Kelmė Wind Farm (Lithuania)	31
Suvorovo Wind Farm (Bulgaria)	10	Breda-Hazeldonk Wind Farm (Netherlands)	32
Zadar 2P & 3P Wind Farms (Croatia)	11	Zeewolde Wind Farm (Netherlands)	33
Vítězná Wind Farm (Czech Republic)	12	Kjøllefjord Wind Farm (Norway)	34
Middelgrunden Offshore Wind Farm (Denmark)	13	Margonin Wind Farm (Poland)	35
Hvide Sande Wind Farm (Denmark)	14	Bałtyk 2 & 3 Offshore Wind Farms (Poland)	36
Herro Wind Farm (Estonia)	15	WindFloat Atlantic (Portugal)	37
Pjelax Wind Farm (Finland)	16	Fântânele-Cogealac Wind Farm (Romania)	38
Urakkaneva Wind Farm (Finland)	17	Clashindarroch Wind Farm (Scotland)	39
Andilly-Les-Marais Community Wind Farm (France)	18	Čibuk 1 Wind Farm (Serbia)	40
Saint-Brieuc Offshore Wind Farm (France)	19	Molar del Molinar Wind Farm (Spain)	41
Cham Longe Wind Farm (France)	20	Celada Fusion Wind Farm (Spain)	42
Elster Wind Farm (Germany)	21	Åndberg Wind Farm (Sweden)	43
Langenbrander Höhe Wind Farm (Germany)	22	Sundsvall Wind Cluster (Sweden)	44
Wikinger Offshore Wind Farm (Germany)	23	Stölsäterberget Wind Farm (Sweden)	45
Mörsdorf Wind Farm (Germany)	24	Rampion Offshore Wind Farm (United Kingdom)	46
Kafireas Wind Cluster (Greece)	25	Pen y Cymoedd Wind Farm (United Kingdom)	47
Oweninny Wind Farm (Ireland)	26	Millennium Wind Farm (United Kingdom)	48
Galway Wind Park (Ireland)	27	Tylyguiska Wind Farm (Ukraine)	49
Partinico-Monreale Wind Farm (Italy)	28		



© Burgenland Energie AG

Andau Wind Farm

 **Austria**

237 MW · 79 turbines · Commissioned 2013 · Burgenland Energie

Community relations & ownership

“Community investment and light-pollution reduction at Austria’s largest wind farm.”

PROJECT


Local situation

Andau is Austria’s largest wind farm, located in the Seewinkel region of Burgenland, a UNESCO biosphere reserve. Years after commissioning, the project faced two community concerns. First, residents wanted a financial stake in the wind farm. Second, they continued to express dissatisfaction with the wind farm’s blinking red lights during the nighttime.

The approach

Citizens were offered direct co-ownership stakes in two of the turbines at a guaranteed fixed annual return. Demand was so high that shares had to be allocated by lottery. In parallel, the developer spent four years collaborating with Austro Control and the Austrian Ministry of Infrastructure to pilot an aircraft detection system that activates lights during the night only when aircraft approach.

IMPACT HIGHLIGHTS




ENERGY

155,000 households powered annually



CLIMATE & NATURE

90% reduction in night-time lighting



JOBS & ECONOMY

130 permanent local jobs



COMMUNITY BENEFIT

€3.4m raised via citizen investment



SIGNATURE IMPACT

Lighting pilot changed national regulation



Boneffe Wind Farm

 **Belgium**

18 MW · 9 turbines · Commissioned in 2022 · Eneco

Community relations & ownership

“Advancing a contested wind project through long-term dialogue.”

PROJECT

Local situation

Boneffe became one of the most debated wind projects in Belgium. Discussions began as early as 2008 and were marked by sustained opposition from local groups who raised concerns about biodiversity and landscape impacts. Because of repeated legal challenges, the project’s permit was annulled twice by the State Council. This led to a decade of additional environmental studies, public inquiries, and project revisions.

The approach

The wind farm was reshaped through prolonged interaction between the developer, authorities and citizens. A full row of three turbines was removed and the project site was relocated well beyond the legal 600m distance from homes. In addition, 30 ha of specially managed bird habitat were created. To ensure long-term transparency, the Supervisory Committee includes local stakeholders and residents were offered co-ownership of the project.

IMPACT HIGHLIGHTS



ENERGY

12,000 households powered annually



CLIMATE & NATURE

30 ha of managed bird habitats



COMMUNITY WELLBEING

900m+ distance from homes



COMMUNITY BENEFIT

€300k raised via co-ownership



SIGNATURE IMPACT

Supervisory committee composed of local stakeholders



© Luminus

Kluzendok Wind Farm

 **Belgium**

28.4 MW · 10 turbines · Repowered in 2026 · Luminus & Ecopower

Community benefits & local value

“Twenty years of citizen wind in the Port of Ghent.”

PROJECT

Local situation

Kluzendok wind farm lies in the industrial heart of the Port of Ghent, where wind energy was incorporated early into the port’s spatial planning. The Port selected its wind partners through a formal tender in 2003. In 2026, the first three legacy turbines were replaced by two modern machines that now generate 4.7 times more electricity.

The approach

Citizens have a financial stake in the project in two ways. 20% of the project is owned by Ecopower, a citizen cooperative whose members are also its electricity customers, giving them access to cheaper electricity. Luminus, the majority stakeholder, also offer residents priority access to co-invest and benefit from guaranteed annual returns.

IMPACT HIGHLIGHTS



ENERGY

24,000 households powered annually



CLIMATE & NATURE

Decarbonisation of the Port of Ghent



JOBS & ECONOMY

Sustained operations & maintenance jobs



COMMUNITY BENEFIT

4% annual dividends



SIGNATURE IMPACT

20% citizen ownership



© MET Group

Suvorovo Wind Farm

 **Bulgaria**

60 MW · 30 turbines · Commissioned 2012 · Enhol

Community relations & ownership

“From contested development to zero complaints.”

PROJECT

Local situation

The Suvorovo wind farm initially faced strong opposition, with residents raising concerns about environmental impacts, agricultural land use and disruption to rural livelihoods. Individual lease agreements, compensation terms and access rights all required negotiation. No single solution could resolve the concerns of all affected parties at once.

The approach

The developer opened negotiations with residents, landowners, farmers and tenants, revisiting agreements multiple times until all parties were satisfied. Specific turbines were relocated to resolve disputes. The municipal council hosted structured meetings throughout. Since commissioning in 2012, not a single complaint has been filed. The mayor’s view is simple: “There are only benefits from the wind park.”

IMPACT HIGHLIGHTS



ENERGY

7,000 households powered annually



CLIMATE & NATURE

Site restoration and afforestation



JOBS & ECONOMY

23 permanent local jobs



COMMUNITY BENEFIT

€500k+ annual municipal revenue



SIGNATURE IMPACT

Zero complaints since commissioning

Zadar 2P & 3P Wind Farms



Croatia

111 MW · 18 turbines · Commissioned 2023 · ENCRO

Community benefit & local value

“Croatia’s first subsidy-free wind project with long-term community engagement”

PROJECT

Local situation

Located in Zadar County across the municipalities of Benkovac and Obrovac, these wind farms mark a watershed moment for Croatian renewable energy. They are the first utility-scale wind project in the country developed entirely outside a subsidy scheme. The project demonstrates that market-driven renewable energy is viable in Croatia and can be a genuine force for local benefit.

The approach

From development through to years of operation, the developer maintained a sustained programme of community engagement. Public hearings were supported by information published in local newspapers. Local workers were prioritised during construction. Over time, the project has delivered cultural sponsorship, educational outreach, tourism support, and regular site visits for politicians, professionals, and students.

IMPACT HIGHLIGHTS



ENERGY

85,000 households powered annually



TOURISM

Educational points on nature protection and energy



CULTURAL

Youth cultural outreach through plays



COMMUNITY BENEFIT

€450k annual municipal income



SIGNATURE IMPACT

Aid partnerships with Red Cross & Church



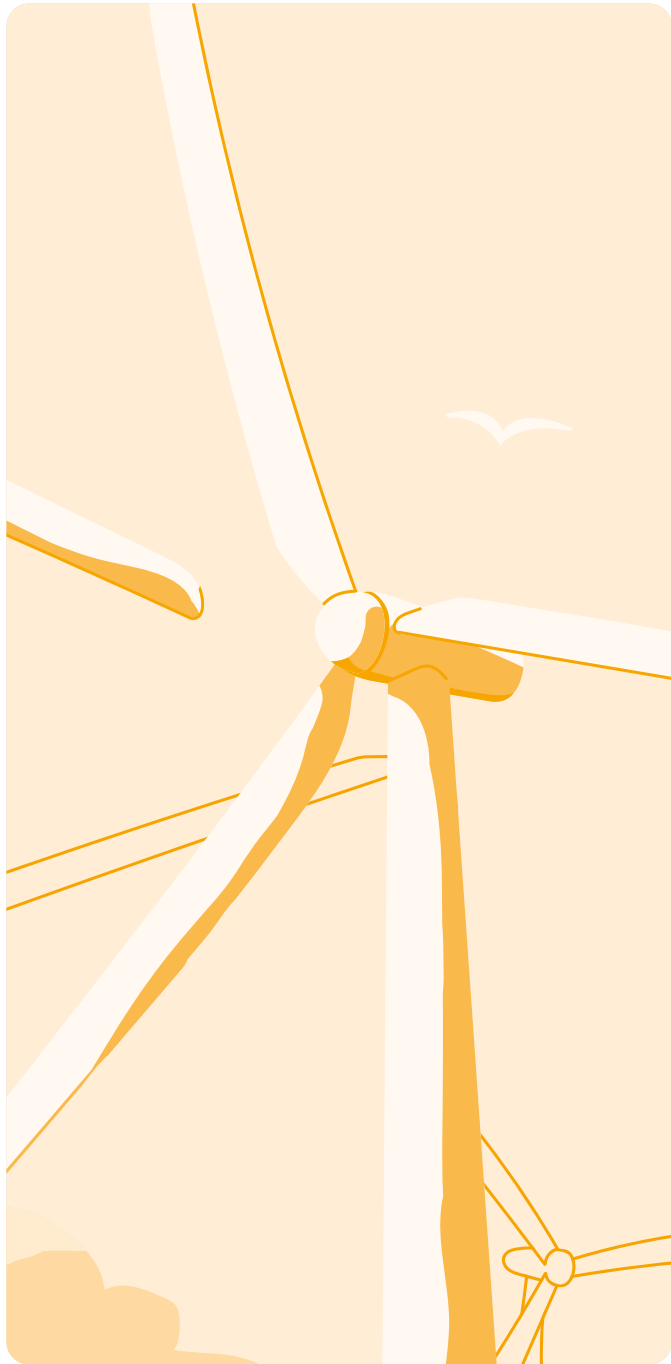
© ENCRO



© ENCRO



© ENCRO



Vítězná Wind Farm

 **Czech Republic**

3 MW · 1 turbine · Commissioned 2014 · Eldaco

Community relations & ownership

“A pioneer of community-owned wind energy in Czechia.”

PROJECT

Local situation

The Vítězná wind farm, locally nicknamed the “Vítězná Giant,” is a textbook example of how citizen co-ownership can transform a wind turbine from an imposition into a point of local pride. The developer structured the project as a joint-stock company where the municipality and individual residents – students and retirees alike – could become co-owners.

The approach

During development, residents were offered priority shares for only 1 CZK, granting them voting rights across the planning phase. Once building permits were secured, residents could subscribe to regular shares at an accessible 1,000 CZK each (around €40), guaranteeing further citizen oversight throughout operation.

IMPACT HIGHLIGHTS



ENERGY

4,000 households powered annually



AGRICULTURE

Cohabitation with forage production



JOBS & ECONOMY

400 local citizen investors



COMMUNITY BENEFIT

6% annual dividends



SIGNATURE IMPACT

Local oversight from development to operation



Middelgrunden Offshore Wind Farm

 Denmark

40 MW · 20 turbines · Commissioned 2001

Community relations & ownership

“From harbour dumping ground to community-owned offshore wind.”

PROJECT

Local situation

Middelgrunden sits just outside Copenhagen Harbour, on a reef used for over 200 years as a dumping ground for waste. It was among the world's first offshore wind farms and is owned by a citizen cooperative and the municipality of Copenhagen. Early plans drew concerns about noise and visual impact, and the Danish Society for the Conservation of Nature initially rejected the site.

The approach

The Middelgrunden cooperative launched an awareness campaign that included tours of existing wind farms to address citizens' concerns. They revised the layout following public consultation, reducing the number of turbines and reorganising them into a single arc. Thanks to these efforts, opposition became support and has stayed that way ever since.

IMPACT HIGHLIGHTS



ENERGY

40,000 households powered annually



ENGAGEMENT

Outreach to 50,000-100,000 people



TOURISM

6,000+ visitors since 2017



COMMUNITY BENEFIT

7.5% annual dividends



SIGNATURE IMPACT

50% citizen owned / 50% municipal owned



© Kenneth Dahl

Hvide Sande Wind Farm

 Denmark

9 MW · 3 turbines · Commissioned 2011

Community benefits & local value

“The wind farm that saved the harbour.”

PROJECT

Local situation

Hvide Sande is a port village of 3,000 people. When larger vessels began bypassing the harbour — too small for modern ships — the town faced a slow economic collapse. The port needed a major expansion it could not afford. In 2010, local residents established a community foundation to develop an onshore wind farm, directing its profits toward revitalising the town.

The approach

Annual rental payments from the wind farm to the harbour gave the port the financial backing to take out a loan and fund its expansion. Larger vessels returned as a result, and Vattenfall subsequently chose Hvide Sande as the service port for three offshore wind farms. The turbines also power a district heating system, supplying the town with cheap and sustainable heat.

IMPACT HIGHLIGHTS



ENERGY

28,000 households powered annually



CLIMATE & NATURE

Wind-powered district heating



JOBS & ECONOMY

50+ jobs due to harbour upgrade



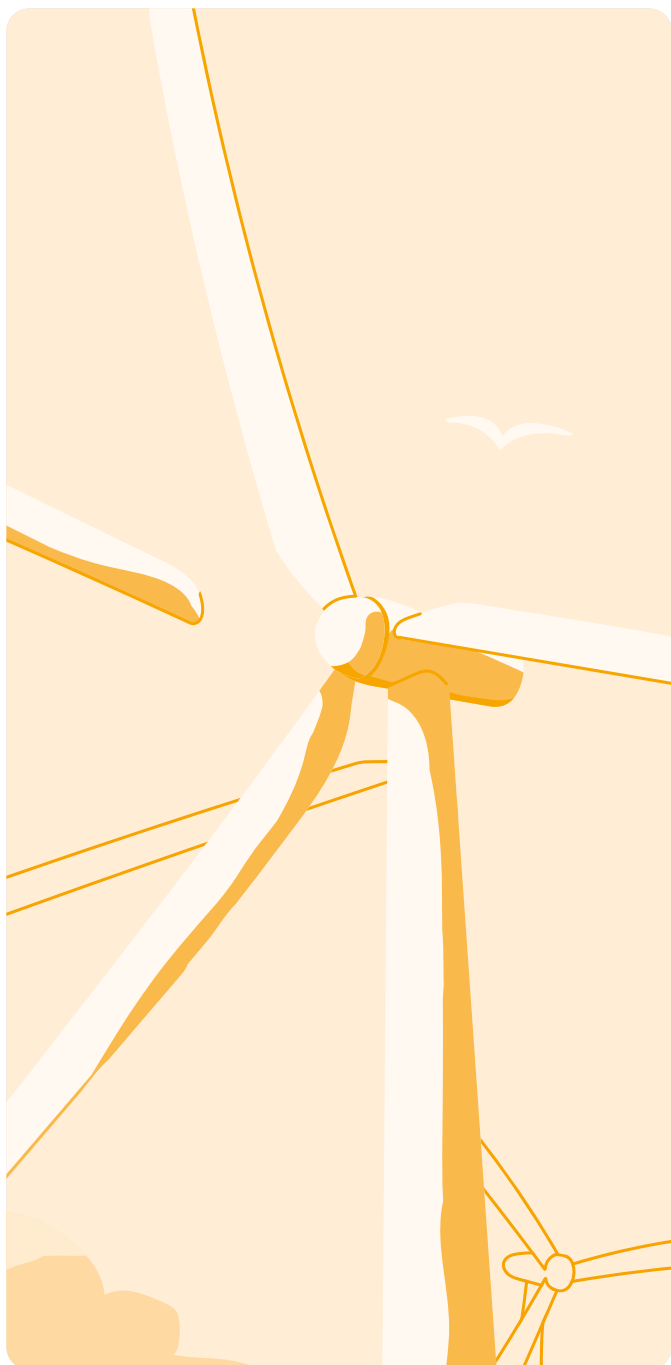
COMMUNITY BENEFIT

7.5% annual dividends



SIGNATURE IMPACT

Funded harbour modernisation



Herro Wind Farm

 Estonia

21–25 turbines · Under development · Sunly

Community relations & ownership

“Earning your share through participation in wind development.”

PROJECT

Local situation

Herro Wind Farm is planned in Valga County, a sparsely populated rural region. The developer Sunly observed that planning-phase participation is often low because it takes time and usually goes unrewarded. Therefore, they created a way to recognise the real cost of engagement and better accommodate citizens’ participation in shaping the project.

The approach

The developer launched a programme that turns participation into an asset. Residents earn virtual shares in the project in exchange for attending meetings, subscribing to the newsletter or sending views to officials. Those shares can be converted to cash or held as the project develops. Additionally, low fixed electricity prices were guaranteed for nearby households.

IMPACT HIGHLIGHTS



ENERGY

100,000-
125,000
households
powered
annually



ENGAGEMENT

Outreach to 7
villages



JOBS & ECONOMY

€300,000
annual levy



COMMUNITY BENEFIT

Fixed low
electricity price
for residents



SIGNATURE IMPACT

Participation
rewarded with
shares



© Fortum

Pjelax Wind Farm

 Finland

380 MW · 56 turbines · Commissioned 2024 · Fortum & Helen

Community benefits & local value

“Everyday dialogue for wind energy development.”

PROJECT

Local situation

Pjelax is Finland’s third largest wind farm, located in the municipalities of Närpiö and Kristiinankaupunki. When environmental authorities flagged the site’s overlap with a nationally important bird area, supplementary assessments were carried out before the project proceeded. Land lease agreements also had to be concluded with over 400 landowners across both municipalities.

The approach

From the start, a local office was opened in Närpiö so that staff were physically present and accessible throughout development. Construction was communicated actively and transparently to local residents. The wind farm was inaugurated as a community celebration with hundreds of local stakeholders attending. Since commissioning, local associations receive funds from the wind farm and decide independently how to spend it.

IMPACT HIGHLIGHTS



ENERGY

300,000 households powered annually



CLIMATE & NATURE

Low-carbon concrete for foundations



JOBS & ECONOMY

6 Finnish subcontractors for construction



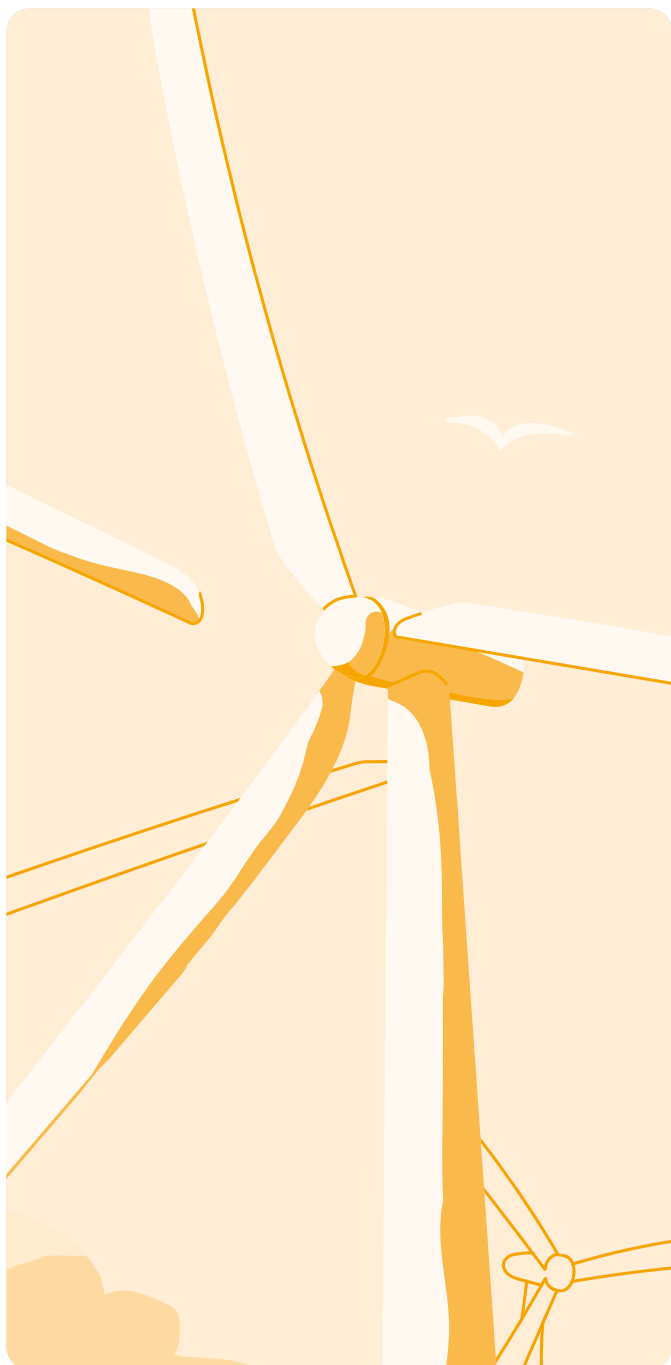
COMMUNITY BENEFIT

€3.1m annual municipal income



SIGNATURE IMPACT

Revenue-linked community benefit fund



Urakkaneva Wind Farm

+ Finland

60 MW · 9 turbines · Construction ready · ABO Energy & Infinergies

Community relations & ownership

“How persistence and dialogue turned rejection into approval.”

PROJECT

Local situation

After years of development, the Urakkaneva Wind Farm zoning plan was repealed by Ylivieska City Council by a single vote in autumn 2018. Residents were concerned about turbine visibility across the Kalajoki Valley and distances to households. This created a local climate where trust was essential before the project could move forward.

The approach

The developers relaunched the project, integrating concerns raised during the first process: the site was moved further north to increase distance from households and turbines were condensed to decrease visibility. Engagement went beyond legal requirements, with hybrid public meetings, a project website and a local business event. The result: in 2021, the project was approved by a clear majority.

IMPACT HIGHLIGHTS



ENERGY

9,500 households powered annually



CLIMATE & NATURE

Reduced residential & landscape impact



JOBS & ECONOMY

Local procurement for construction



COMMUNITY BENEFIT

Improved roads



SIGNATURE IMPACT

12 years of community engagement



© Valorem

Andilly-Les-Marais Community Wind Farm



 France

16.8 MW · 3 turbines · Commissioned 2024 · COOPEC & Valorem & Terra Energies

Community relations & ownership

“A wind farm initiated, owned and governed by citizens.”

PROJECT

Local situation

Initiated in 2017 by the municipality of Andilly-Les-Marais alongside local association ANE!rs17 and the Aunis Atlantique Intermunicipality, this project reimagined who controls wind energy. Rather than a developer-led model, it was co-developed by three parties: COOPEC (a citizen cooperative), Valorem (a renewable energy operator) and Terra Energies (a regional investment fund).

The approach

A shareholders’ agreement signed in 2021 established shared governance, with the citizen cooperative holding majority decision-making power over the project. Nearly 380 residents invested their savings to become cooperative members, gaining direct influence over planning and operational decisions. A biannual monitoring committee, open to all, ensures ongoing transparency across the wind farm’s entire lifecycle.

IMPACT HIGHLIGHTS



ENERGY

10,600 households powered annually



CLIMATE & NATURE

€1.55m dedicated to local energy saving actions



JOBS & ECONOMY

6–10 local jobs



COMMUNITY BENEFIT

€62k annual community funding



SIGNATURE IMPACT

Fast & Fair Award winner



© Iberdrola

Saint-Brieuc Offshore Wind Farm

 France

496 MW · 62 turbines · Commissioned 2024 · Iberdrola

Community benefits & local value

“From fishing flotilla blockades to shared stewardship of the sea.”

PROJECT

Local situation

Initiated in 2011, the Saint-Brieuc offshore wind farm faced over a decade of resistance. Artisanal fishers, particularly those in the centuries-old scallop industry, saw the project as a threat to their livelihoods. The resistance combined legal challenges in French and European courts with at-sea blockades by fishing flotillas.

The approach

Iberdrola reduced project footprint to avoid primary scallop beds and aligned turbines to preserve fishing vessel navigation routes. Affected fishermen were compensated during construction. Drilling noise data was released to counter misinformation about seabed impact. Fishermen were brought into the environmental monitoring committees, giving them direct oversight of operations. The Bay of Saint-Brieuc has since become a reference for offshore-community coexistence.

IMPACT HIGHLIGHTS



ENERGY

835,000 households powered annually



TOURISM

15,000+ visitors since 2023



JOBS & ECONOMY

1,700 direct jobs



COMMUNITY BENEFIT

€10m annual local tax revenue



SIGNATURE IMPACT

€11.8m invested in the Port of Brest assembly hub



Cham Longe Wind Farm

 France

39.95 MW · 14 turbines · Repowered 2020 · Boralex

Nature-positivity & sustainability

“Repowering France’s highest wind farm with local investment.”

PROJECT

Local situation

First commissioned in the mid-2000s, Cham Longe operates at an altitude of 1,497 metres in the Ardèche Department, making it France’s highest wind farm. After 15 years of operating under extreme meteorological conditions, the site became a prime candidate for repowering.

The approach

12 of the original 14 turbines were replaced with a new generation of machines better adapted to high-altitude environments: heated blades to prevent icing; gearless technology for increased durability; and serrated blades for noise reduction. This almost doubled installed capacity. Citizens were invited to invest and share in the wind farm’s long-term returns – a first for a French repowering project.

IMPACT HIGHLIGHTS



ENERGY

19,975 households powered annually



CLIMATE & NATURE

Second-life deployment of dismantled turbines in Spain



JOBS & ECONOMY

7 jobs for maintenance



COMMUNITY BENEFIT

6% annual dividends



SIGNATURE IMPACT

€435,490 invested by citizens



Elster Wind Farm

 **Germany**

105.6 MW · 16 turbines · Commissioned 2025 · VSB

Nature-positivity & sustainability

“Repowering wind energy as ecological restoration.”

PROJECT

Local situation

Fifty outdated turbines were dismantled and replaced with 16 modern machines, increasing output sixfold while reducing land take by over 30%. This repowering project showed that wind development can improve ecological conditions rather than just minimising impact.

The approach

VSB collaborated with NABU — Germany’s largest environmental NGO — to design voluntary ecological measures beyond statutory requirements. Citizens were offered a five-year savings bond at a fixed annual interest rate. Regional companies were commissioned for construction. During works, 1,200 sand lizards were relocated to replacement habitats, and 36 fruit trees were planted in a new orchard meadow.

IMPACT HIGHLIGHTS



ENERGY

67,000 households powered annually



CLIMATE & NATURE

20% of site ecologically enhanced



JOBS & ECONOMY

Regional contractors for construction



COMMUNITY BENEFIT

€470k annual municipal revenue



SIGNATURE IMPACT

Sixfold energy output



© BayWa r.e.

Langenbrander Höhe Wind Farm

 **Germany**

18 MW · 4 turbines · Commissioned 2024 · BayWa r.e.

Community benefits & local value

“From visualisation to value-sharing.”

PROJECT

Local situation

Langenbrander Höhe lies in the northern Black Forest, a year-round destination for hikers. The landscape is valued for its scenic trails and biodiversity, making any visible change highly sensitive. Tourism and nature protection were therefore central to the development approach.

The approach

During the planning phase, an augmented reality app allowed residents to visualise the turbines from any location using their smartphone. Local residents were offered a co-investment opportunity and discounted electricity tariffs. A wind-themed hiking trail became a permanent regional attraction. Nature compensation measures included climate-resilient forest planting and the installation of 100 bat and woodpecker boxes for species conservation.

IMPACT HIGHLIGHTS



ENERGY

14,500 households powered annually



CLIMATE & NATURE

1.4 ha of mixed forest replanted



TOURISM

Official scenic viewpoint



COMMUNITY BENEFIT

10% electricity discount for nearby residents



SIGNATURE IMPACT

Turbine-visualisation app for residents



© Eric Haynes

Wikinger Offshore Wind Farm

 **Germany**

350 MW · 70 turbines · Commissioned 2017 · Iberdrola

Community benefits & local value

“An infrastructure-led model for regional economic value.”

PROJECT

Local situation

The Wikinger Offshore Wind Farm is located in the German Baltic Sea. Navigating the strict German Exclusive Economic Zone permitting framework, Iberdrola sought to transform a large-scale energy development into a driver for regional revitalisation, particularly for the Mecklenburg-West Pomerania region.

The approach

The Port of Sassnitz-Mukran was selected as the project’s long-term interface with the coast, anchoring offshore activities locally. A supplier event in Berlin for more than 100 companies resulted in 50% of principal contracts going to German businesses. An additional €8 million in contracts was directed to companies in the Baltic region, reinforcing cross-border industrial cooperation.

IMPACT HIGHLIGHTS



ENERGY

350,000 households powered annually



CLIMATE & NATURE

600 kt CO₂ avoided annually



JOBS & ECONOMY

80+ jobs for operations & maintenance



COMMUNITY BENEFIT

Permanent service base



SIGNATURE IMPACT

50% of principal contracts awarded to German companies



© Kreuzschnabel

Mörsdorf Wind Farm

 **Germany**

26 MW · 11 turbines · Commissioned 2015 · ABO Energy

Community benefits & local value

“The wind farm that funded a million-visitor tourist attraction.”

PROJECT

Local situation

Fifteen years ago, Mörsdorf was a 600 person village in the Hunsrück that struggled to maintain basic amenities with its €70k annual municipal budget. This all changed when ABO Wind approached the municipality in 2009 with the opportunity to host a wind farm.

The approach

Thanks to substantial local tax revenues from the wind farm, the municipality was able to build the Geierlay suspension bridge, one of the longest in Germany. This turned the quiet town into a popular tourist destination, generating additional income from parking, restaurants and shops. ABO Energy has since installed information signs along the bridge footpath explaining how wind energy made it all possible.

IMPACT HIGHLIGHTS



ENERGY

29,600 households powered annually



TOURISM

2m visitors to the bridge since 2015



JOBS & ECONOMY

Dozens of local hospitality jobs



COMMUNITY BENEFIT

€200,000 annual municipal income



SIGNATURE IMPACT

14x municipal budget in 15 years



© Enel Green Power

Kafireas Wind Cluster

 Greece

167.9 MW · 73 turbines · Commissioned 2019 · Enel Green Power

Community benefits & local value

“Integrating large-scale wind into everyday island life.”

PROJECT

Local situation

The Kafireas Wind Cluster sits on the island of Evia, an ecologically sensitive area where the developer initially faced local opposition. Turning that resistance into lasting support required the wind farm to become genuinely useful to the people living alongside it.

The approach

During planning, benefit-sharing projects were co-designed with local communities. For example, the project funded the PDO certification of local Kissouri honey, supporting the livelihoods of local beekeepers. It also sponsors local sports and associations. Additionally, Enel implemented a zero-emissions construction site that ran on solar energy, with excavated materials reused locally. Over 100 km of built roads improved connectivity across the island.

IMPACT HIGHLIGHTS



ENERGY

59,000 households powered



CLIMATE & NATURE

100 ha of forest restored



JOBS & ECONOMY

1,200 jobs for construction



COMMUNITY BENEFIT

3% of electricity revenues to municipality



SIGNATURE IMPACT

Zero-emissions construction site



Oweninny Wind Farm

 Ireland

192 MW · 60 turbines · Commissioned 2019-2023 · ESB & BnM

Nature-positivity & sustainability

“From industrial peatland to renewable energy landscape.”

PROJECT

Local situation

Oweninny Wind Farm is a joint venture between ESB and BnM reflecting the commitment of both organisations to the Government’s target of achieving 80% renewable energy by 2030. The project was delivered in two phases, with 29 turbines erected in 2019, and 31 more entering commercial operation in 2023. It was built on 2,400 hectares of formerly industrial peatland.

The approach

A dedicated Community Liaison Officer ensured continuous engagement, integrating local feedback into the layout. Peatland restoration and a Community Benefit Fund were initiated by the project. The Oweninny Visitor Centre delivers STEM programmes for schools and communities; offers guided tours, a 5 km walking track and a developing sensory garden; and hosts corporate visits, team-building activities, and community events such as family days and Christmas celebrations.



IMPACT HIGHLIGHTS



ENERGY

140,000 households & businesses powered annually



CLIMATE & NATURE

circa 2,400 ha of restored peatland



JOBS & ECONOMY

100 jobs for construction



COMMUNITY BENEFIT

€18m total community fund



SIGNATURE IMPACT

€3m public visitor centre





© SSE Renewables

Galway Wind Park

Ireland

174 MW · 58 turbines · Commissioned 2017 · SSE Renewables & Greencoat Renewables

Community benefits & local value

“Wind revenues supporting education, community projects and social mobility.”

PROJECT

Local situation

Galway Wind Park is located in Connemara, a rural region where young people face significant financial barriers to third-level education. The wind farm’s community fund is Ireland’s largest and was designed not only to support immediate local needs, but to address a structural challenge that outlasts any single project or grant cycle.

The approach

The fund operates on three tracks: an annual Local Community Fund for sustainability and youth programmes; a biennial Major Projects Fund for larger legacy initiatives aligned with UN SDGs; and the Galway Wind Park Scholarship, covering 50% of third-level fees for students within 15 km, with twelve annual recipients supported for up to three years.

IMPACT HIGHLIGHTS



ENERGY

140,000 households powered annually



CLIMATE & NATURE

200 ha of restored peatland



JOBS & ECONOMY

€20m spent with local suppliers and contractors



COMMUNITY BENEFIT

€400k+ annual fund



SIGNATURE IMPACT

Scholarships covering 50% of fees



© ERG

Partinico–Monreale Wind Farm

 Italy

42 MW · 10 turbines · Commissioned 2023 · ERG



Nature-positivity & sustainability

“Unlocking wind deployment through local and regional coordination.”

PROJECT

Local situation

In Southern Italy, wind development often stalls in the face of administrative complexity and local scepticism. This Sicilian repowering project replaced 19 turbines with 10 more powerful machines. It proved that transparency and regional partnership could unlock deployment where others had failed.

The approach

Multi-stage public consultations formally integrated citizen feedback into the project’s redesign. Close coordination with the Sicilian Regional Government brought institutional alignment. The project gained national visibility through Legambiente’s Ecological Transition Construction Sites Tour. On-site information panels were installed, and the site was restored through renaturalisation with native species.

IMPACT HIGHLIGHTS



ENERGY

18,000 households powered annually



CLIMATE & NATURE

44 kt CO₂ avoided annually



JOBS & ECONOMY

45 jobs during construction



COMMUNITY BENEFIT

50% local suppliers



SIGNATURE IMPACT

Triple output with half the turbines

Rivoli Veronese Wind Farm

 Italy

8 MW · 4 turbines · Commissioned 2013 · AGSM AIM

Community relations & ownership

"The wind farm the village helped design."

PROJECT

Local situation

Rivoli Veronese is one of Europe's most cited examples of wind energy generating local value at every level. Located in northern Italy's Adige Valley on a site home to rare wild orchids, the project set out to integrate the community into the planning decision process.

The approach

Around 1,000 people were involved in the development process. The local community was invited to choose between two turbine layout designs. Local families were offered seven-year bonds at a strong annual return. The site became an environmental education laboratory with restored habitats, a cycling trail and a structured school visit programme.

IMPACT HIGHLIGHTS



ENERGY

5,000 households powered annually



CLIMATE & NATURE

Restoration of wild orchids



JOBS & ECONOMY

700 local investors



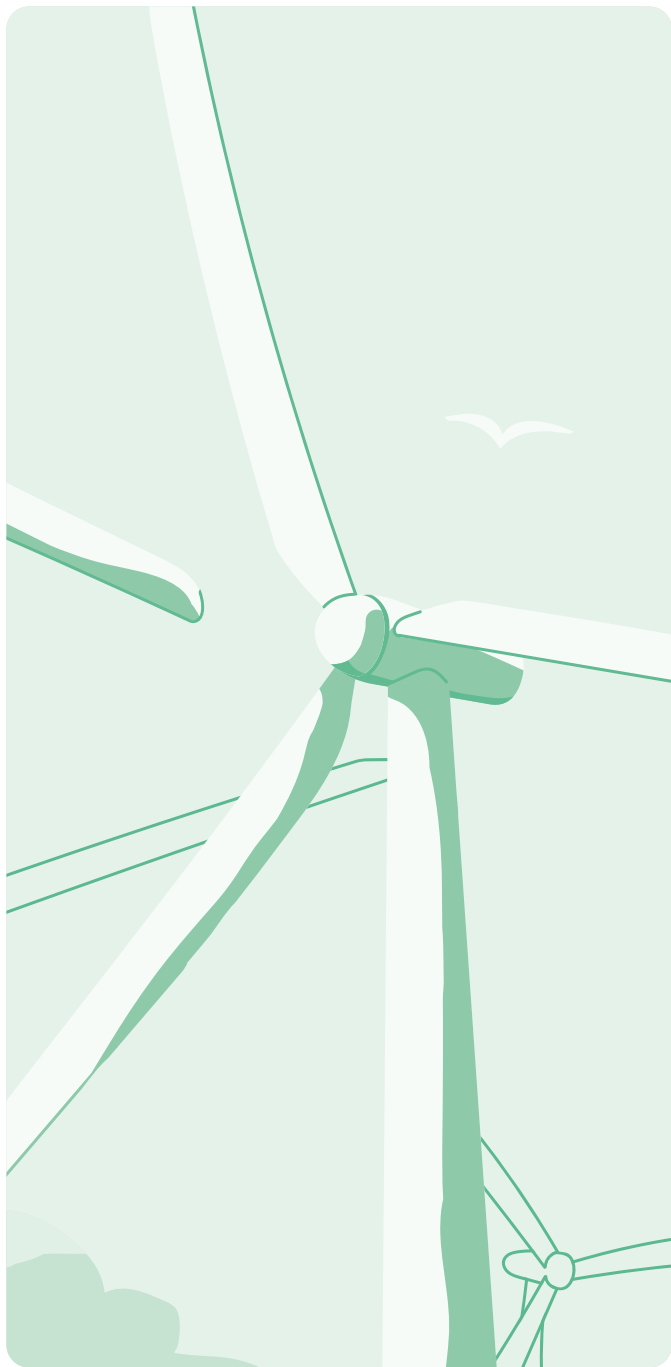
COMMUNITY BENEFIT

6.5% annual returns



SIGNATURE IMPACT

Two dedicated community engagement employees



Laflora Energy Wind Farm

 **Latvia**

108.8 MW · 16 turbines · Under construction · Latvenergo

Nature-positivity & sustainability

“From peat bog to energy hub.”

PROJECT

Local situation

Laflora has extracted peat from the Kaigu bog for decades. Knowing that extraction cannot continue indefinitely, Laflora spent years planning what comes next. The answer was wind energy, developed by Latvenergo, and designed to serve regional businesses.

The approach

Before any formal decisions were taken, residents were surveyed and a public discussion was held. The municipal council’s approval was ultimately unanimous. The entirety of construction is contracted to Latvian companies, with turbine towers manufactured locally. On completion, the wind farm will power Latvia’s first green industrial zone, enabling emission-intensive businesses to decarbonise their operations.

IMPACT HIGHLIGHTS



ENERGY

160,000 households powered annually



CLIMATE & NATURE

Reuse of degraded peatland



JOBS & ECONOMY

€40m directed locally for construction



COMMUNITY BENEFIT

€272,000 annual municipal income



SIGNATURE IMPACT

100 ha green industrial zone



© Ignitis Renewables photo

Kelmé Wind Farm

 Lithuania

314 MW · 44 turbines · Commissioned 2025 · Ignitis Renewables

Community benefits & local value

“From early dialogue to lasting local value and guaranteed local revenue.”

PROJECT

Local situation

In the Kelmé district, the developer set out to prove that community engagement does not end when permits are granted. The challenge was building a model of benefit-sharing that remained tangible and predictable across the full project lifecycle.

The approach

Early consultations were complemented by a formal anonymous grievance mechanism. A Community Support Fund launched during construction transitioned into a generation-based fee in operation, delivering roughly €1m in annual municipal income. Local contractors handle maintenance. The project sponsors festivals, educational activities, and community infrastructure, funding 11 local projects in 2025 alone.



© Ignitis Renewables photo

IMPACT HIGHLIGHTS



ENERGY

250,000 households powered monthly



AGRICULTURE

Cohabitation with cereal farming



JOBS & ECONOMY

€1m annual municipal revenue



COMMUNITY BENEFIT

€236,000 annual community fund



SIGNATURE IMPACT

€1/MWh generation fee



© Ignitis Renewables photo



Breda-Hazeldonk Wind Farm

 **Netherlands**

7.5 MW · 3 turbines · Commissioned 2015

Community benefit & local value

“A blueprint for community-backed, locally sourced green energy”

PROJECT

Local situation

The city of Breda set a target to become energy neutral by 2045 and recognised early that this would require onshore wind. The municipality led development itself, conducting all site studies and securing permits, before putting the project to market via a competitive tender with a citizen participation condition attached.

The approach

Developers GreenTrust and Izzy Projects won the tender and worked with local energy cooperative BRES on a crowdfunding campaign that raised nearly €1 million from 340 local bondholders. Electricity is purchased exclusively by Hezelaer, a Breda-based energy company, keeping green power local. The wind farm pays an annual fee to the municipality, which funds the city’s climate programme and a broader sustainability grant fund.

IMPACT HIGHLIGHTS



ENERGY

6,000 households



CLIMATE & NATURE

Climate fund for sustainable projects



JOBS & ECONOMY

Dutch-made turbines



COMMUNITY BENEFIT

340 local bondholders



SIGNATURE IMPACT

100% local loop



Zeewolde Wind Farm

 Netherlands

320 MW · 83 turbines · Commissioned 2022

Community relations & ownership

"The world's largest 100% locally owned wind farm."

PROJECT

Local situation

When the province of Flevoland decided to replace hundreds of scattered old turbines with a consolidated modern wind farm, a group of local farmers chose not to wait for a developer to come to them. They went door to door and built the project from within the community, creating what is now the world's largest 100% locally-owned wind farm.

The approach

Ownership was structured to be as inclusive as possible. For residents without land, a separate cooperative enabled participation from just €250. Governance, ecology, and long-term community benefit were built in from the start: a wildlife detection system protects white-tailed eagles, a €450k annual community fund finances local projects, and a community-owned 31 MW battery park sits alongside the wind farm itself.

IMPACT HIGHLIGHTS



ENERGY

300,000 households powered annually



CLIMATE & NATURE

500 kt CO₂ avoided annually



JOB & ECONOMY

Local firms engaged



COMMUNITY BENEFIT

€450k annual community fund



SIGNATURE IMPACT

100% locally owned at scale



© Floris Oosterveld

Kjøllefjord Wind Farm

 Norway

39.1 MW · 17 turbines · Commissioned 2006 · Statkraft

Community benefits & local value

“Wind power in one of Norway’s most remote municipalities.”

PROJECT

Local situation

Kjøllefjord Wind Farm is located in Lebesby municipality, a remote fishing community in Finnmark with limited economic opportunity. The project brought jobs and infrastructure but also revealed shortcomings in how Sámi reindeer herders, who traditionally use parts of the area, had been engaged. That experience became an important turning point.

The approach

Initially, a formal settlement was reached with affected reindeer herders. However, when planning the repowering, Statkraft treated its own earlier shortcomings as a design problem to be solved. Engagement with Sámi communities was made earlier, herder costs during impact assessments were covered, and key documents were translated into Northern Sámi. Past conflict became the foundation for a better model.

IMPACT HIGHLIGHTS



ENERGY

7,500 households powered annually



EDUCATION

Hosts international study tours



JOBS & ECONOMY

€5m local construction contracts



COMMUNITY BENEFIT

€350k annual municipal income



SIGNATURE IMPACT

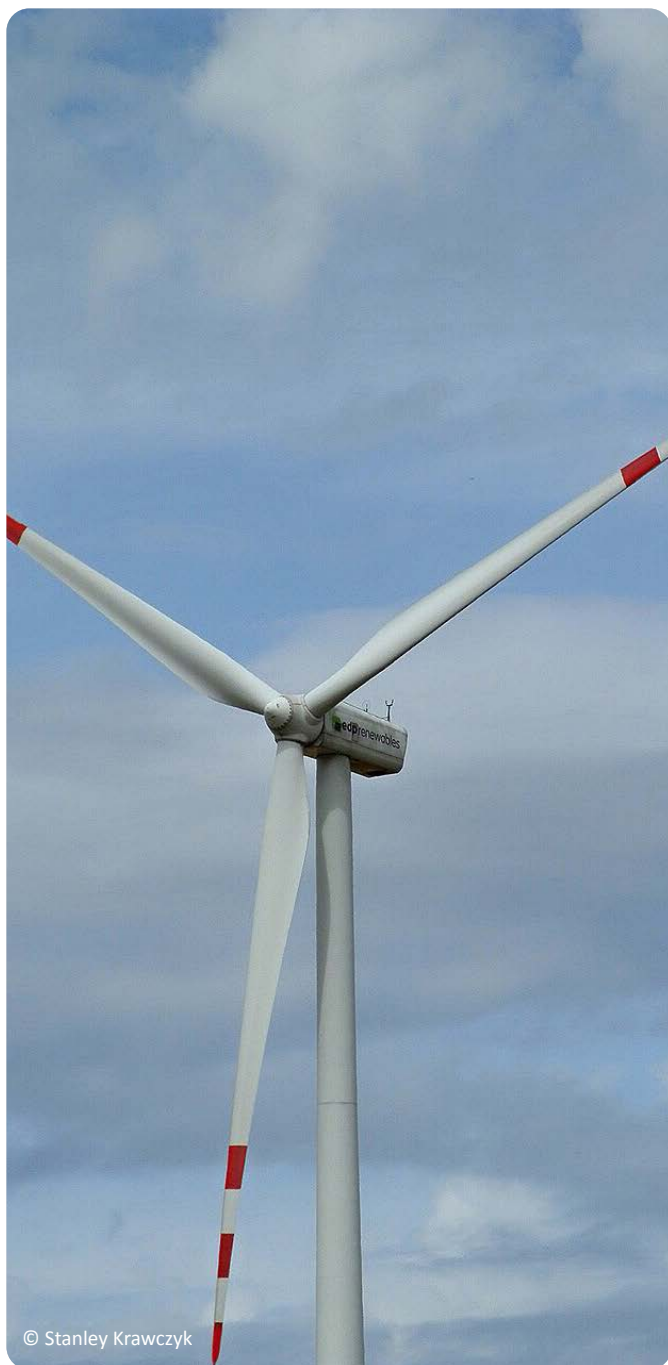
Annual reindeer herding compensation



© Statkraft



© Statkraft



© Stanley Krawczyk

Margonin Wind Farm

 Poland

120 MW · 60 turbines · Commissioned 2010 · EDP Renewables

Community benefits & local value

“How wind revenues helped transform a rural town.”

PROJECT

Local situation

Margonin is a small rural gmina in Greater Poland, a region historically dependent on agriculture with limited industrial investment. Like many Polish rural municipalities in the 2000s, it faced chronic underfunding of public services, ageing infrastructure, and slow demographic decline.

The approach

Years before turbines arrived, residents shaped a local zoning plan that designated wind-compatible areas. As a result, the project’s public consultation closed with zero formal protests. Wind farm tax revenue later made Margonin one of the region’s wealthiest rural towns. EDPR continued investing locally, building a local stadium. 15 years after commissioning, the developer organised celebrations to mark the anniversary with the community.

IMPACT HIGHLIGHTS



ENERGY

90,000 households powered annually



CLIMATE & NATURE

600 kt CO₂ avoided annually



JOBS & ECONOMY

10 jobs for operations & maintenance



COMMUNITY BENEFIT

€1.4m annual tax revenue



SIGNATURE IMPACT

Zero formal protests filed



Bałtyk 2 & 3 Offshore Wind Farms

 Poland

1,440 MW · 100 turbines · Under construction · Equinor & Polenergia

Community benefit & local value

“Bringing offshore wind closer to local communities through education”

PROJECT

Local situation

Bałtyk 2 and 3 are twin offshore wind farms under construction off the Pomeranian coast, near the fishing ports of Łeba and Ustka. Offshore wind was entirely new territory for the country. This required developers to build public understanding from the ground up.

The approach

Equinor and Polenergia designed, built and fully sponsored Poland’s first offshore wind exhibition at the National Maritime Museum in Gdańsk. Now in its second year, “Baltic Sea. Sea of Green Energy” has welcomed over 56,000 visitors through interactive exhibits, school programmes and workshops, establishing itself as a permanent national educational centre for offshore wind.



IMPACT HIGHLIGHTS



ENERGY

2 million+ households powered annually



EDUCATION

Academy of Maritime Competence launched



JOBS & ECONOMY

100 jobs for operations & maintenance



COMMUNITY BENEFIT

€17.7k annual compensation per fishing vessel



SIGNATURE IMPACT

Established Poland’s first permanent offshore wind exhibition



WindFloat Atlantic

Portugal

25 MW · 3 turbines · Commissioned 2020 · Ocean Winds

Nature-positivity & sustainability

“Pioneering floating wind while preserving local fisheries.”

PROJECT

Local situation

Viana do Castelo is a port city in northern Portugal where fishing represents an industry central to the region’s identity and economy. The waters off its coast have been worked by artisanal fishing communities for generations. During the public consultation period, the fishing community strongly opposed the project arguing that the turbines would damage their livelihoods.

The approach

Ocean Winds engaged in direct negotiations with local fishing association VianaPesca. Turbine placement was adjusted to preserve access to fishing grounds, and a compensation agreement was reached with affected vessel owners. Eight years of independent environmental monitoring later, the site tells its own story: over 270 marine species coexist with the structures and the floating platforms have generated a reef effect that actively fosters marine life.

IMPACT HIGHLIGHTS



ENERGY

25,000 households powered annually



CLIMATE & NATURE

270+ marine species identified



JOBS & ECONOMY

1,500 jobs for construction



COMMUNITY BENEFIT

€1m fisher compensation agreement



SIGNATURE IMPACT

Zero ecosystem disruption



© Jason Bickley

Fântânele–Cogealac Wind Farm

 Romania

34 MW · 17 turbines · Commissioned 2010 · Evryo

Community benefits & local value

“Romania’s largest wind farm and a decade of energy for good.”

PROJECT

Local situation

The municipalities of Fântânele and Cogealac are small, with limited public revenue and few economic anchors beyond farming. At the same time, Romania’s energy sector has been grappling with the legacy of coal dependency and the social costs of transition, a national conversation in which this wind farm has become an unexpected participant.

The approach

The developer created a programme called “Generators of Good” that invites employees to propose solutions to specific social problems in communities where the company operates. This has ensured for over 12 years that benefit-sharing measures are tailored to local contexts. The wind farm has also become a national platform for industrial transition, hosting events for coal miners exploring reconversion into renewable energy.

IMPACT HIGHLIGHTS



ENERGY

400,000 households powered annually



AGRICULTURE

Cohabitation with cereal farming



JOBS & ECONOMY

Coal miner reconversion



COMMUNITY BENEFIT

€90k annual community fund



SIGNATURE IMPACT

10% of Romania’s green energy



© Vattenfall

Clashindarroch Wind Farm

Scotland

37 MW · 18 turbines · Commissioned 2015 · Vattenfall

Community benefit & local value

“The wind farm that funded a decade of community renewal”

PROJECT

Local situation

Clashindarroch Wind Farm sits in rural Aberdeenshire. The surrounding area covers four communities: Huntly, Strathbogie, Cabrach and Tap o’Noth. All face the same challenge, common to many remote Scottish communities: strengthening long-term economic prospects for future generations.

The approach

Before commissioning, a comprehensive local participation process – the “Clashindarroch Conversation” – allowed residents to define priorities for the wind farm’s Community Fund. The resulting fund has disbursed over £2.6 million across more than 220 grants since 2015, supporting everything from youth programmes and mental health services to heritage restoration and sustainable transport. Vattenfall has also undertaken peatland and moorland restoration alongside tree planting as part of the site’s Habitat Management Plan.



© Vattenfall

IMPACT HIGHLIGHTS



ENERGY

27,000
households



CLIMATE & NATURE

49,000t CO₂
offset



JOBS & ECONOMY

£1 granted =
£7.70 in outside
investment



COMMUNITY BENEFIT

£2.6m in grants
disbursed

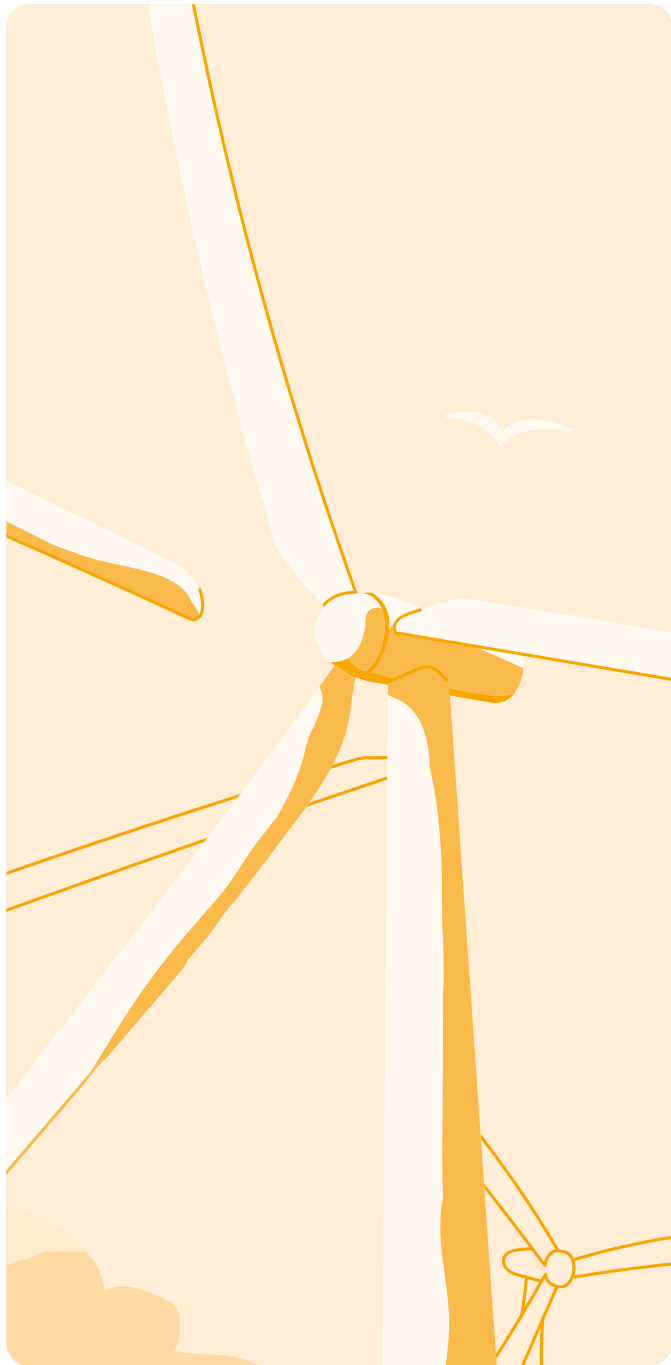


SIGNATURE IMPACT

Co-design of
the Community
Fund



© Vattenfall



Čibuk 1 Wind Farm

 **Serbia**

158 MW · 57 turbines · Commissioned 2019 · Vetroelektrane Balkana

Community relations & ownership

“A replicable model of community engagement for Serbia.”

PROJECT

Local situation

The plains of Vojvodina in northern Serbia are among the windiest areas in the Western Balkans, but the region had little prior experience of large-scale wind development. Serbia’s renewable energy framework was still maturing, and international financing from the EBRD and IFC came with social and environmental conditions that went well beyond what domestic law required.

The approach

The developer maintained continuous engagement throughout planning, holding public meetings at three key stages. Ahead of construction, open days were organised to explain upcoming works, scheduled carefully around local farming calendars. During operation, a fixed share of annual profits supports community projects, and a biodiversity partnership with BirdLife Serbia is working to restore saker falcon populations.

IMPACT HIGHLIGHTS



ENERGY

113,000 households powered annually



CLIMATE & NATURE

Partnership with BirdLife Serbia



JOBS & ECONOMY

400 jobs for construction



COMMUNITY BENEFIT

2% profits to community projects



SIGNATURE IMPACT

Model replicated for -ibuk 2 & 3



© Iberdrola

Molar del Molinar Wind Farm

 Spain

49.5 MW · 11 turbines · Repowered 2026 · Iberdrola

Nature-positivity & sustainability

“A 25-year rural commitment renewed through circular repowering.”

PROJECT

Local situation

Alcadozo and Peñas de San Pedro are small municipalities in Albacete long affected by depopulation. For more than 25 years, the Molar del Molinar wind farm has been a stable economic anchor in the area. When Iberdrola chose to repower the site, that relationship was extended for another generation and the project became a demonstration for what wind energy’s second life can deliver.

The approach

75 legacy turbines were replaced with 11 more powerful machines, reducing the site’s footprint while boosting output. Local suppliers were prioritised throughout. All decommissioned blades were recycled through EnergyLOOP, the Iberian Peninsula’s first blade recycling plant, founded by Iberdrola and FCC Ámbito. Municipal revenue continues to support public services and residents were offered financial participation to share in the project’s value.

IMPACT HIGHLIGHTS



ENERGY

29,500 households powered annually



CLIMATE & NATURE

70% less land take



JOBS & ECONOMY

20+ temporary & permanent jobs



COMMUNITY BENEFIT

Financial participation opportunity



SIGNATURE IMPACT

No blades to landfill

Celada Fusion Wind Farm

 Spain

48 MW · 10 turbines · Commissioned 2022 · ACCIONA Energía

Community benefits & local value

“Wind power is bringing a Spanish village back to life.”

PROJECT

Local situation

ACCIONA Energía’s Celada Fusion wind farm in Hornillos de Cerrato, Palencia, has become a model for revitalising depopulated areas through renewable energy. As one of the region’s most modern projects, it shows how wind energy can support employment, infrastructure improvements and socioeconomic development while promoting environmental protection and local integration.

The approach

The project promotes local participation through tangible social and economic benefits for Hornillos de Cerrato. Benefits linked to the wind farm include a taxi service for elderly residents, subsidies for fibre-optic internet and electricity, and new community facilities such as a swimming pool, paddle court and youth activities. It also supports tourism initiatives, local businesses and environmental education programmes.

IMPACT HIGHLIGHTS



ENERGY

136,000 MWh/
year



CLIMATE & NATURE

60,000 tons of
CO₂ emissions
avoided



JOBS & ECONOMY

280 construction
jobs; 5 annual
operations and
maintenance
jobs



COMMUNITY BENEFIT

Hornillos
de Cerrato’s
population grew
from 109 in 2011
to 175 in 2024



SIGNATURE IMPACT

Wind power
helping
reverse rural
depopulation



© ACCIONA Energía



© ACCIONA Energía



© ACCIONA Energía



Åndberg Wind Farm

 Sweden

286 MW · 53 turbines · Commissioned 2022 · OX2

Community benefits & local value

“Building long-term support through benefit-sharing.”

PROJECT

Local situation

Härjedalen faces the pressures typical of rural Norrland: an ageing population, few employment opportunities, and local services that are increasingly difficult to sustain. The Åndberg wind farm secured support by building a lasting financial relationship with the people around it.

The approach

One percent of annual profits flow to a community benefit fund, managed by an independent local association that decides how to spend it. The fund backs local businesses, restores heritage sites and keeps essential village services running. The goal is straightforward: invest in the local economy to give people a reason to stay.

IMPACT HIGHLIGHTS



ENERGY

160,000 households powered annually



CLIMATE & NATURE

156 kt CO₂ avoided annually



JOBS & ECONOMY

100 jobs for construction



COMMUNITY BENEFIT

30+ local projects funded



SIGNATURE IMPACT

1% of profits redistributed locally

© C40OX2



Sundsvall Wind Cluster

 Sweden

310 MW · 84 turbines · Commissioned 2018–2019 · Eolus AB

Community benefit & local value

“Shaping the future of renewable energy together”

PROJECT

Local situation

The Jenåsen, Kråktorpet and Nylandsbergen wind farms form the Eolus Sundsvall cluster, located in Sundsvall Municipality. Grouping the projects in the same area allowed Eolus to share grid infrastructure investments across all three sites. Together, they generate renewable electricity while contributing to local development through structured community funding.

The approach

Each wind farm contributes to an annual community benefit fund that supports local associations across recreation, conservation, heritage, sports and schools. Funded projects include wheelchair-accessible fishing piers, a renovated village culture centre and a pétanque court.



IMPACT HIGHLIGHTS



ENERGY

206,000 households powered annually



CLIMATE & NATURE

Low-carbon electricity



JOBS & ECONOMY

Local construction jobs across all three sites



COMMUNITY BENEFIT

€36,000 annually (combined)



SIGNATURE IMPACT

Three coordinated community funds supporting the same region





Stölsäterberget Wind Farm

 Sweden

47 MW · 8 turbines · Commissioned 2024 · wpd Scandinavia

Community benefit & local value

“The wind farm strengthens community and belief in the future”

PROJECT

Local situation

The project took several years to develop due to the permitting process. Both regional and local companies participated in construction, with strong support from the municipality and residents throughout development.

The approach

Community benefit funds support local projects, strengthen community cohesion and enable collaboration between residents and businesses. Investments include renovated halls, youth centres and meeting places, contributing to long-term local development.



IMPACT HIGHLIGHTS



ENERGY

155 GWh
(~31,000
households)



CLIMATE & NATURE

Low-carbon
electricity



JOBS & ECONOMY



COMMUNITY BENEFIT

SEK 110,000
annually



SIGNATURE IMPACT



© DTEK

Tylygulska Wind Farm

 **Ukraine**

114 MW · 19 turbines · Commissioned 2023 · DTEK

Community benefits & local value

“Community engagement and energy resilience under wartime constraints.”

PROJECT

Local situation

Mykolaiv Oblast sits in southern Ukraine, bordering an active conflict zone since Russia’s full-scale invasion in February 2022. Civilian infrastructure across the region including energy supply has been repeatedly targeted. Building a wind farm here during active hostilities was an act of economic continuity as much as energy development.

The approach

When open public consultation became impossible, the project pivoted to institution-to-institution coordination with host communities. A narrower but more resilient form of engagement suited to wartime conditions. Over 600 local workers were employed throughout construction, providing economic stability at a moment of acute uncertainty. Proceeds were also directed toward practical community needs: school heating systems and energy-efficient windows for local secondary schools.

IMPACT HIGHLIGHTS



ENERGY

200,000 households powered annually



CLIMATE & NATURE

Clean power for resilience



JOBS & ECONOMY

600 jobs for construction



COMMUNITY BENEFIT

Two schools upgraded



SIGNATURE IMPACT

Built during conflict



Rampion Offshore Wind Farm

 **United Kingdom**

400 MW · 116 turbines · Commissioned 2018 · RWE

Community benefits & local value

“Turning visibility into a climate education landmark.”

PROJECT

Local situation

Located off the coast of Brighton, Rampion is one of the most visible offshore wind farms in Europe, facing a densely populated seafront and the protected landscape of the South Downs National Park. This inevitably led to concerns over visual impact.

The approach

Community input led to turbines being moved further offshore. The project also turned visibility into a local asset through tourism and education, creating a seafront visitor centre that attracts thousands of visitors annually. Marine ecology was actively enhanced through artificial reef installations around turbine foundations. A community fund, partly invested as a long-term endowment, ensures local benefits continue well beyond decommissioning.

IMPACT HIGHLIGHTS



ENERGY

350,000 households powered annually



CLIMATE & NATURE

75k artificial reef cubes installed



JOBS & ECONOMY

60+ jobs for operations & maintenance



COMMUNITY BENEFIT

£3.1m community fund



SIGNATURE IMPACT

Offshore visitor centre



Pen y Cymoedd Wind Farm

 **United Kingdom**

228 MW · 76 turbines · Commissioned 2017 · Vattenfall

Community benefits & local value

“Where coal once powered the valley, wind now funds its future.”

PROJECT

Local situation

Located in the South Wales Valleys, Pen y Cymoedd was built in a region historically shaped by coal mining and long-term economic decline. From the outset, the project was framed not only as an energy development, but as an opportunity to deliver lasting local benefits.

The approach

Engagement was designed to reach people who rarely participate in formal consultations through freepost forms, bus advertising and an online campaign that crowdsourced ideas for the community fund. Half of total investment was directed to Welsh businesses. A £2.4m annual community fund finances genuine legacy projects. In doing so, it has helped shift the role of energy infrastructure in the region from extraction to reinvestment.

IMPACT HIGHLIGHTS



ENERGY

188,000 households powered annually



CLIMATE & NATURE

1,500 ha restored peatland



JOBS & ECONOMY

600 jobs for construction



COMMUNITY BENEFIT

£2.4m annual community fund



SIGNATURE IMPACT

£1.5 generated for £1 of fund invested

Millennium Wind Farm

 **United Kingdom**

65 MW · 26 turbines · Commissioned 2009 · Nadara

Community benefits & local value

“Shared ownership and shared benefit in the Scottish Highlands.”

PROJECT

Local situation

The Millennium Wind Farm sits above Invergarry and Fort Augustus in the Great Glen, a corridor with heavy through traffic but very small resident communities. Although the area attracts tourists, year round economic activity is limited. In this context, wind energy offered a rare and reliable source of recurring local income.

The approach

The wind farm’s Community Value Proposition ensures local communities share long-term project benefits. It includes an Energy cooperative for local investment and a Community Benefit Fund, which has backed 90 projects so far, including healthcare and retail services. Additional support includes sustainability grants, a support scheme for students pursuing qualifications in renewable energy and sustainability and an annual forum for knowledge sharing.

IMPACT HIGHLIGHTS



ENERGY

178,222 MWh annually



CLIMATE & NATURE

79,844t CO₂ offset annually



JOBS & ECONOMY

Energy cooperative with 627 members invested



COMMUNITY BENEFIT

90 local projects funded (2023 -2025)



SIGNATURE IMPACT

A comprehensive Community Value Proposition



© Nadara



© Nadara



© Nadara

WindEurope is the voice of the wind industry, actively promoting wind power in Europe and worldwide. It has over 600+ members with headquarters in more than 35 countries, including the leading wind turbine manufacturers, component suppliers, research institutes, national wind energy associations, developers, contractors, electricity providers, financial institutions, insurance companies and consultants. This combined strength makes WindEurope Europe's largest and most powerful wind energy network.

Wind[°]
EUROPE

Rue Belliard 40, 1040 Brussels, Belgium

T +32 2 213 1811 · F +32 2 213 1890

windeurope.org